

Installation guide for RRPileCalc and PileWallCalc programs

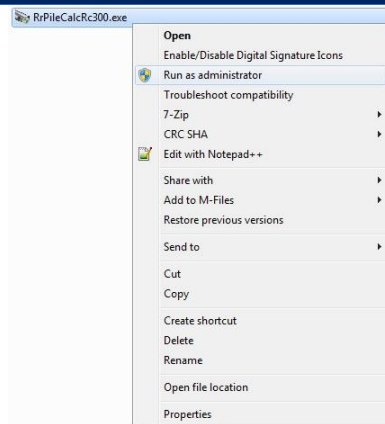
Note!

Installation of the programs requires Administrative rights to the computer. After installation is done, the registration of the programs can be done with normal User rights.

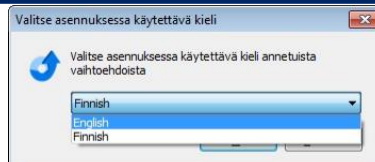
Installation of both programs is done similar way. The steps of installation are shown below.

- 1 Start installation by clicking installation program with mouse's right button. Choose command "Run as administrator" from popup menu.

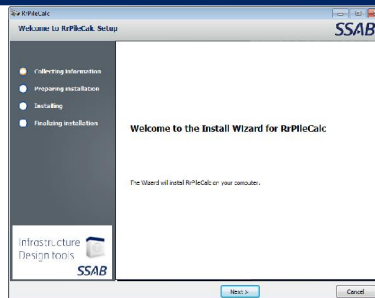
Starting the installation by using this option ensures that the registry entries are saved correctly.



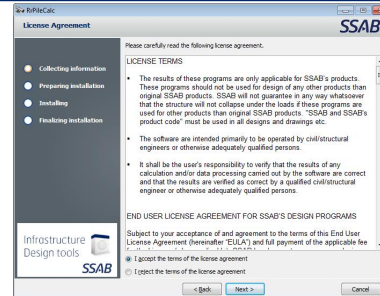
- 2 Choose preferred language from selection list and press "OK".



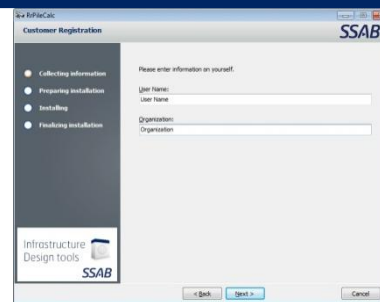
- 3 To continue installation, press "Next >".



- 4 The terms of the License agreement need to be accepted to continue the installation.



- 5 Give user information.
This information will be shown at the bottom of the program window.



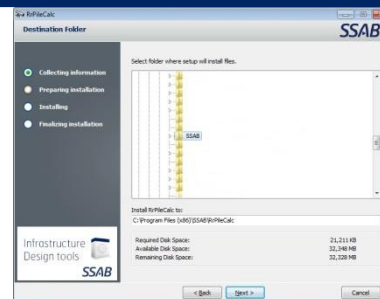
- 6 Choose location where programs will be installed.

It's recommended to install the programs to following folders:

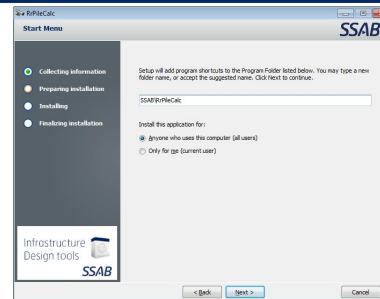
RRPileCalc: "C:\Program Files (x86)\SSAB\RrPileCalc"

PileWallCalc: "C:\Program Files (x86)\SSAB\PileWallCalc".

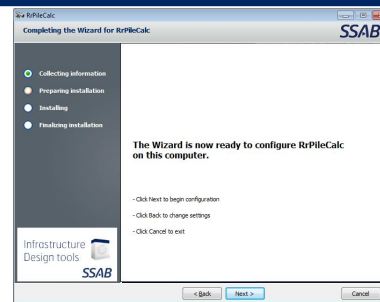
Programs can also be installed in other location by choosing wanted location from folder list.



- 7 Define the location of program icon at the start menu and define users of the program.



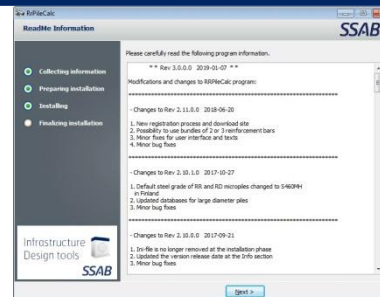
- 8 To begin actual installation, press "Next >".



- 9 Installation begins and program files are copied.

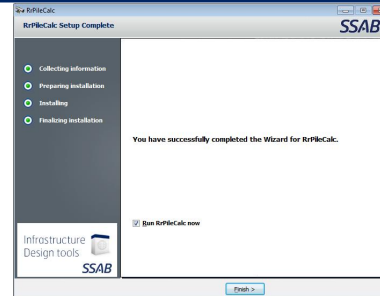


- 10 When installation is ready, a list of updates is shown.
List shows the whole update history of the program.



- 11 Installation is finished by pressing "Finish >" button.

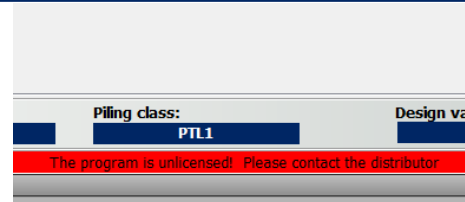
You can also Run the program immediately after installation.



- 12 When program is started there will be a red bar at the bottom of the window and text "The program is unlicensed! Please contact the distributor".

To remove the text and to enable full functionality of the program it needs to be registered.

From program choose:
File => Settings => Registration



- 13 Required information for registration is shown with yellow color.

To register the program you also need to approve the Privacy statement of SSAB.

By pressing "Acquire license code" button the program will contact license server and acquire the code.

Registration is finalized by pressing "OK" button.

The installation is done!