

SSAB

# Machine tools for Hardox<sup>®</sup> wear plate



Our premium machine tools and inserts are developed specifically to increase performance when machining Hardox<sup>®</sup> wear plate. They are 'Made to Match', in other words.

# Optimize your Hardox® wear plate machining with our selection of matching tools

To support your workshop processes we are now providing a selected range of machine tools and inserts for high productivity when machining Hardox® wear plate.

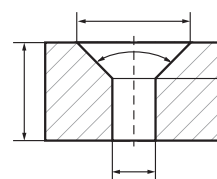
Hardox® wear plate is known for its good workshop properties. Still, it's a very hard and tough material, which naturally is the reason it has become the world's leading wear resistant material.

Our machining experts have carefully tested the performance of the machine tools and inserts for Hardox® wear plate in stationary and radial drill machines. Using these products is a great way to avoid premature wear or tool breakage.

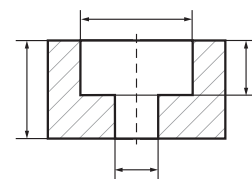
Machine tools for Hardox® wear plate are sold and distributed by SSAB in EU and in many other countries. Contact your local sales representative for information about availability in your area.

## 95% faster

The processing time to countersink an M16 screw can for example be reduced by more than 95% if using the countersink kit for Hardox® wear plate. The calculation is based on a hole depth of 10.8 mm in Hardox® 450.



Countersinks



Counterbores

**Relevant measures (mm) for M10 – M24/M30.  
Countersinks/Counterbores kit for Hardox® wear plate.**

Screw/bolt size	Hole diameter	Counter-sink diameter	Counter-sink max depth	Counter-bore diameter	Counter-bore max depth
M10	11	20,5	40	18	22
M12	14	26	65	20	40
M14	16	30	65	25	65
M16	18	32	84	26	65
M20	22	38	84	33	65
M24	26	40	84	40	84
M30	32	-	-	48	84

**There are several reasons why SSAB has initiated technical partnerships to develop workshop tools and consumables**

### Knowledge

In SSAB we have substantial knowledge in working with high-strength steel. By offering the whole solution we can give even better customer support by putting our knowledge to best possible use.

### Productivity

High productivity and good quality is essential to being profitable when using high-strength steel. Having easy access to tools and consumables that are matched to our steels is bound to increase productivity.

### Development

To utilize the full potential of Hardox® wear plate, the development of new machine tools need to match the development of harder and more specialized steel. By partnering with producers of high-quality tools, we can support such development.

## M10 – M24/M30 Countersinks/Counterbores kit for Hardox® wear plate

A premium tool set made of an extremely tough material. Saves time and money compared to using drills or other tools not designed for the purpose. Clever system with interchangeable parts to minimize total cost, replaced in seconds. Minimum risk of pilot breakage from heat generation thanks to tolerances as low as c9.



### Tool holders for Hardox® wear plate (M10–M30 screws/bolts)

Morse taper shank tool holder will stay stable thanks to tolerances as low as g7. For countersinking and counterboring and replaced in seconds.

### Countersinks for Hardox® wear plate ( M10–M24 screws/bolts) & Counterbores for Hardox® wear plate ( M10–M30 screws/bolts)

Developed specifically for machining Hardox® wear plate, suitable for unstable conditions. Made of an extremely tough material designed to save both time and money.

### Pilots for Hardox® wear plate (M10–M30 screws/bolts)

Minimum risk of breakage from heat generation thanks to tolerances as low as c9. For countersinking and counterboring and replaced in seconds.

### Inserts for Countersinks/Counterbores

Wear resistant carbide inserts enabling high feed rates.

## HSS-Co8% drill for Hardox® wear plate 15–32 mm

High-performance drill developed specifically for drilling Hardox® wear plate, suitable for unstable conditions. Armour piercing and high-speed steel with 8% cobalt for increased productivity and superior stability thanks to h8 tolerances. Enables efficient machining of Hardox® wear plate up to Hardox® 500, without CNC machines and solid carbide drills.



SSAB is a Nordic and US-based steel company. SSAB offers value added products and services developed in close cooperation with its customers to create a stronger, lighter and more sustainable world. SSAB has employees in over 50 countries. SSAB has production facilities in Sweden, Finland and the US. SSAB is listed on Nasdaq Stockholm and has a secondary listing on Nasdaq Helsinki. [www.ssab.com](http://www.ssab.com)

Join us also on social media:



**SSAB**  
SE-613 80 Oxelösund  
Sweden

T +46 155 25 40 00  
F +46 155 25 40 73  
[contact@ssab.com](mailto:contact@ssab.com)

[www.ssab.com](http://www.ssab.com)

**SSAB**