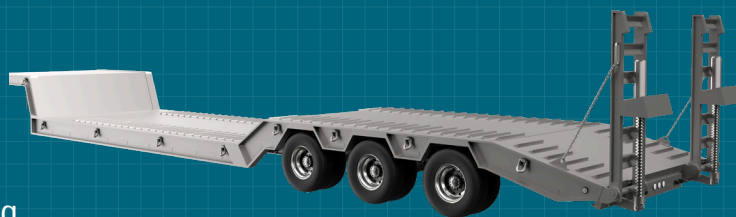

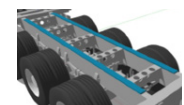





# CARRETAS REBAIXADAS

Uma carreta com plataforma rebaixada, o que permite que ela transporte cargas maiores e equipamentos pesados, tais como tratores e escavadeiras.



COMPONENTES		GRAUS DE AÇO
Viga longitudinal (alma)		Strenx® 700 e 960, 6–15 mm
Viga longitudinal (flange)		Strenx® 700 e 960, 10–30 mm
Viga transversal do chassi		Strenx® 700 e 960, 5–12 mm Perfis tubulares, 8–10 mm
Conjunto de pino mestre		Strenx® 700 e 960, 10–25 mm
Dispositivo de proteção inferior traseiro		Strenx® 700 e 960, 3–5 mm